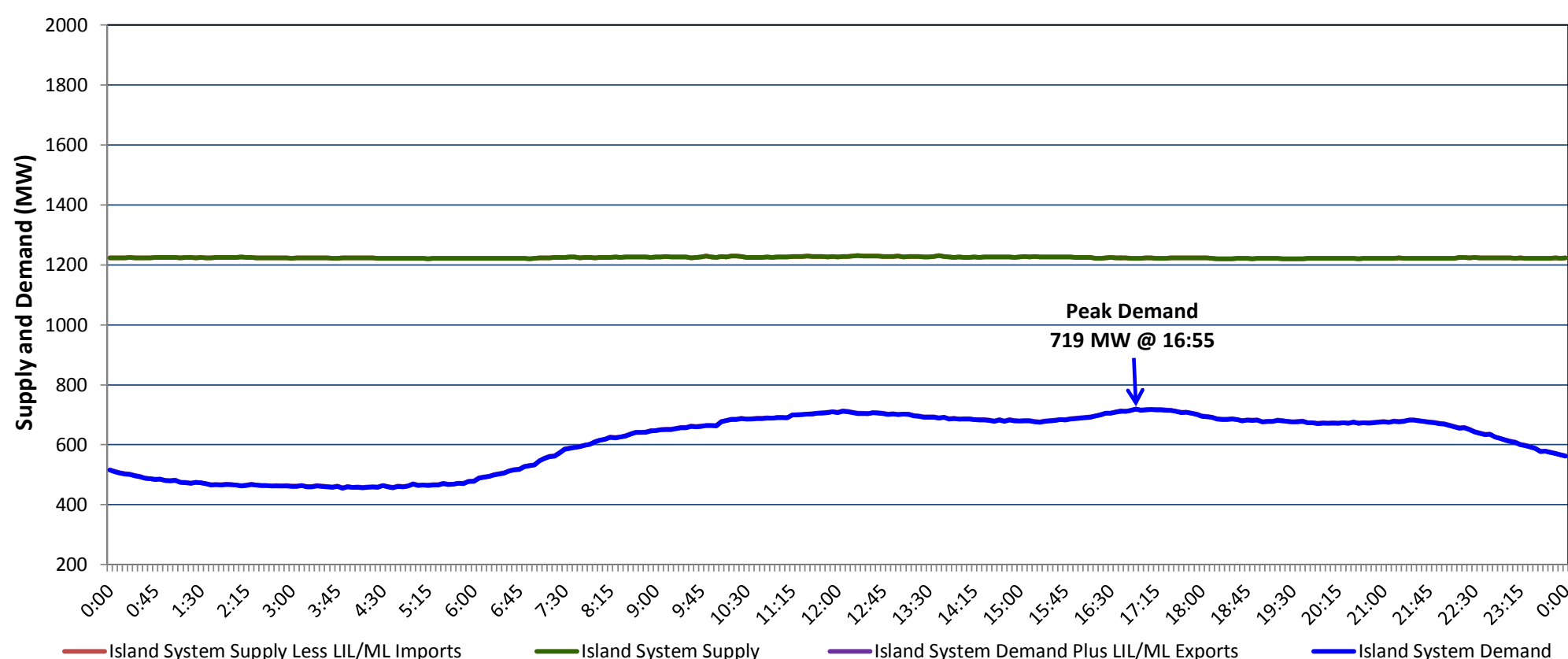


**Newfoundland Labrador Hydro (NLH)
Supply and Demand Status Report Filed Friday, July 10, 2020**

**Section 1
Island Interconnected System Supply, Demand & Exports
Actual 24 Hour System Performance For Thursday, July 09, 2020**



Supply Notes For July 09, 2020

- 1,2
- A As of 1000 hours, May 31, 2020, Bay d'Espoir Unit 1 unavailable due to planned outage (76.5 MW).
 - B As of 1415 hours, June 11, 2020, Holyrood Unit 1 unavailable due to planned outage (170 MW).
 - C As of 0801 hours, June 19, 2020, Bay d'Espoir Unit 2 unavailable due to planned outage (76.5 MW).
 - D As of 0853 hours, June 21, 2020, Holyrood Unit 3 available but not operating (150 MW).
 - E As of 2300 hours, July 03, 2020, Holyrood Unit 2 available but not operating (170 MW).
 - F As of 1356 hours, July 05, 2020, Granite Canal Unit unavailable due to planned outage 36 MW (40 MW).
 - G As of 1000 hours, July 06, 2020, St. Anthony Diesel Plant available at 7.7 MW (9.7 MW).
 - H As of 1519 hours, July 7, 2020, Bay d'Espoir Unit 3 available at 25 MW (76.5 MW).
 - I As of 1238 hours, July 8, 2020, Bay d'Espoir Unit 4 available at 45 MW (76.5 MW).

**Section 2
Island Interconnected Supply and Demand**

Fri, Jul 10, 2020	Island System Outlook ³	Seven-Day Forecast	Temperature (°C)		Island System Daily Peak Demand (MW)	
			Morning	Evening	Forecast	Adjusted ⁷
Available Island System Supply: ⁵	1,205 MW	Friday, July 10, 2020	11	10	740	740
NLH Island Generation: ⁴	925 MW	Saturday, July 11, 2020	14	17	710	710
NLH Island Power Purchases: ⁶	75 MW	Sunday, July 12, 2020	16	17	710	710
Other Island Generation:	205 MW	Monday, July 13, 2020	18	22	760	760
ML/LIL Imports:	- MW	Tuesday, July 14, 2020	18	15	740	740
Current St. John's Temperature & Windchill: 11 °C	N/A °C	Wednesday, July 15, 2020	13	15	750	750
7-Day Island Peak Demand Forecast:	760 MW	Thursday, July 16, 2020	10	12	750	750

Supply Notes For July 10, 2020

- 3
- Notes:
1. Generation outages for running and corrective maintenance are included. These are not unusual for power system operations. They generally do not impact customer supply. The power system operators schedule outages to system equipment whenever possible to coincide with periods when customer demands are low and sufficient supply reserves are available. However, from time to time equipment outages are necessary and reserves may be impacted.
 2. Due to the Island system having no synchronous connections to the larger North American grid, when there is a sudden loss of large generating units there may be a requirement for some customer's load to be interrupted for short periods to bring generation output equal to customer demand. This automatic action of power system protection, referred to as under frequency load shedding (UFLS), is necessary to ensure the integrity and reliability of system equipment. Under frequency events have typically occurred 5 to 8 times per year on the Island Interconnected System and the resultant customer load interruptions are generally less than 30 minutes. With the activation of the Maritime Link frequency controller during the winter of 2018, UFLS events have occurred less frequently.
 3. As of 0800 Hours.
 4. Gross output including station service at Holyrood (24.5 MW) and improved NLH hydraulic output due to water levels (35 MW).
 5. Gross output from all Island sources (including Note 4).
 6. NLH Island Power Purchases include: CBPP Co-Gen, Nalcor Exploits, Rattle Brook, Star Lake, Wind Generation and capacity assistance (when applicable).
 7. Adjusted for curtailable load, market activities and the impact of voltage reduction when applicable.

**Section 3
Island Peak Demand Information
Previous Day Actual Peak and Current Day Forecast Peak**

Thu, Jul 09, 2020	Actual Island Peak Demand ⁸	16:55	719 MW
Fri, Jul 10, 2020	Forecast Island Peak Demand		740 MW

Notes: 8. Island Demand / LIL / ML Exports (where applicable) is supplied by NLH generation and purchases, plus generation owned and operated by Newfoundland Power and Corner Brook Pulp & Paper (Deer Lake Power, DLP).